

TMS

184 THORN HILL ROAD
WARRENDALE, PA 15086-7514 USA

www.tms.org

NON-PROFIT
ORGANIZATION
U.S. POSTAGE
PAID
WARRENDALE, PA
PERMIT NO. 16

ICMOVPE XII



The Twelfth International Conference on **METAL ORGANIC VAPOR PHASE EPITAXY**

CALL FOR PAPERS

With Abstract Information Instructions

May 30-June 4, 2004

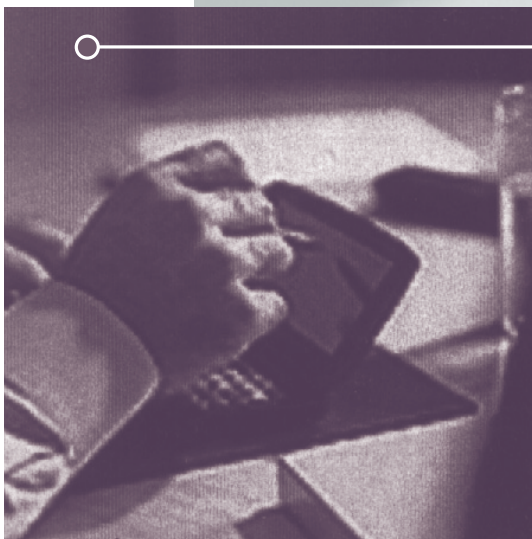
Westin Maui Hotel • Lahaina, Hawaii

SCOPE

The Twelfth International Conference on Metal Organic Vapor Phase Epitaxy (ICMOVPE-XII) will be held May 30 through June 4, 2004 at the Westin Maui Hotel, Lahaina, Hawaii. The conference builds upon the strong tradition of previous conferences of presenting the latest advances in science, technology and applications of MOVPE and related growth techniques. The objective of the conference is to bring together a wide spectrum of specialists from Industry, Commerce, Academia, and National Laboratories to present their most recent progress in the fundamental and applied aspects of MOVPE technology. The program is designed to provide a wide range of opportunities for formal and informal discussions of and presentations on all topics.

TOPICS

- basic growth studies
- surface physics and chemistry
- in-situ probes
- gallium nitride based materials and devices
- indium phosphide based materials
- gallium arsenide based materials
- high brightness LEDs and solid state lighting
- growth of device structures: LEDs, Laser Diodes, FETs
- low dimensional structures patterned growth and selective epitaxy
- mid-infrared materials/gallium antimonide based materials
- new materials: II-V oxides dielectrics, ferroelectric
- real time monitoring and process control
- production and safety issues
- dilute nitride semiconductors
- growth and doping mechanisms
- reactor modeling



Mark your calendar and watch for upcoming bulletins—this is one conference you won't want to miss.

PLEASE COMPLETE AND RETURN THIS CARD IF YOU HAVE A CHANGE OF ADDRESS OR WISH TO ADD A NAME TO OUR MAILING LIST FOR FUTURE ICMOVPE-XII ANNOUNCEMENTS

Please indicate:

- Change of Address
- Addition to Mailing List
- Delete from List

NAME: _____

TITLE: _____

COMPANY, SCHOOL, OR ORGANIZATION: _____

ADDRESS: _____

CITY: _____ STATE: _____ POSTAL CODE: _____

COUNTRY: _____

TELEPHONE NUMBER: _____

FAX NUMBER: _____

E-MAIL: _____

ABSTRACT SUBMISSION INSTRUCTIONS
ABSTRACTS MUST BE PREPARED ACCORDING TO THE FOLLOWING DIRECTIONS

All prospective authors must submit a 150-word abstract by January 15, 2004 using the TMS Conference Management System (CMS). CMS will allow anyone with a World Wide Web Browser to electronically submit an abstract. Access the website at <http://cms.tms.org>. Follow the easy instructions for electronic submission and direct communication with the conference organizers. If you have questions or need assistance while using CMS, please contact Christina Raabe, TMS at 724-776-9000, ext 212 or raabe@tms.org.

Abstract Deadline: January 15, 2004

LATE NEWS ABSTRACTS

A limited number of Late News Abstracts will be considered. A copy of the abstract should be submitted to the program co-chair, Thomas Kuech, no later than May 8, 2004. Authors of accepted papers will be notified before the conference.

SOCIAL FUNCTIONS

Along with the technical program, special social functions are being planned, which include:

- Sunday Welcoming Reception
- Wednesday Symposium Banquet

SPECIAL TOURS

Several special tours will be arranged for attendees and accompanying persons of the conference. The Maui area offers a number of outstanding entertaining options. Details of tours will be published in the Advance Mailer, which will include housing and registration forms.

ABOUT WESTIN MAUI HOTEL

Amidst swaying palms and shimmering water on 12 oceanfront acres, the Westin Maui offers something for everyone. Splash your way through our magnificent 85,000 square-foot aquatic playground with five swimming pools and a thrilling 128-foot water slide. Play a round on the Ka'anapali Golf Course, which has hosted the PGA Seniors Pro-Am, or stroll through the tropical and Asian-influenced gardens. Spend a day pampering yourself with a spa treatment and massage in our Health Club and Spa or relaxing on beautiful Ka'anapali beach. After a day filled with Maui's many thrilling activities, unwind at Tropica, the Westin Maui's signature restaurant. You'll love our ideal location adjacent to the many shops of Whaler's Village. We're also only seven minutes from historic Lahaina Town, featuring extensive shopping, dining and entertainment.

EXHIBITION

In addition to a strong technical program, the ICMOVPE-XII conducts an exhibit of MOVPE technology and services. You and your organization are invited to participate in this special exhibition.

You will have the opportunity to meet the world's top MOVPE researchers and industry leaders. The specialized program of the ICMOVPE-XII attracts the industry's most interested and professional audience.

Companies who are interested in participating should contact Cindy Wilson at TMS by April 30, 2004.

Potential exhibitors will also be given the opportunity to sponsor special events at the conference.

ICMOVPE-XII Exhibit

Cindy A. Wilson
Exhibit Coordinator
TMS
184 Thorn Hill Rd.
Warrendale, PA 15086

(T): 724-776-9000, ext. 231 • (F): 724-776-3770

(E): wilson@tms.org



ORGANIZING COMMITTEE

Conference Chair

Steven DenBaars, Chair

University of California
Building 504, Room 1347A
Materials Department
College of Engineering
Santa Barbara, CA 93106-5050
Phone: (805) 893-8511

E-mail: DenBaars@engineering.ucsb.edu

Program Chairs

Thomas T. Kuech

University of Wisconsin
4629 Engineering Hall
1415 Engineering Drive
Madison, WI 53706-1691
Phone: (608) 263-2922

E-mail: kuech@enr.wisc.edu

James J. Coleman

University of Illinois at Urbana-Champaign
268 Microelectronics Laboratory
208 North Wright Street
Urbana, IL 61801
Phone: (217) 333-2555

Publications Chair

Gerald B. Stringfellow

University of Utah
Department of Electrical and Computer Engineering
50 S. Central Campus Dr., Rm. 3280 MEB
Salt Lake City, UT 84112-9206
Phone: (801) 581-8387

E-mail: stringfellow@ece.utah.edu

CONFERENCE COMMITTEE

Christine Wang

Massachusetts Institute of Technology

Rajaram Bhat

Corning, Inc.

Ron Moon

Agilent Headquarters

Bob Biefeld

Sandia National Laboratories

Stacia Keller

University of California, Santa Barbara

P. Dan Dapkus

University of Southern California

Russel Dupuis

University of Texas, Austin

Shuji Nakamura

University of California, Santa Barbara