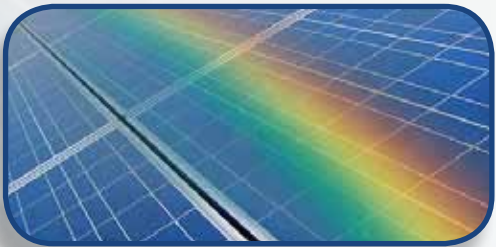
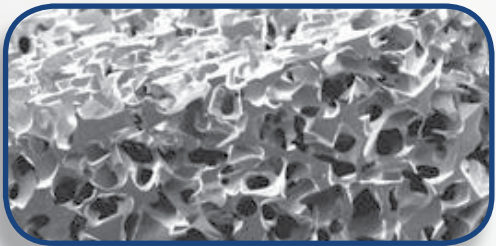


PRICM



THE 8TH PACIFIC RIM INTERNATIONAL CONGRESS ON ADVANCED MATERIALS AND PROCESSING
August 4-9, 2013 • Waikoloa, Hawaii USA



PROGRAM PREVIEW

Register by June 4, 2013 and save!

www.tms.org/meetings/PRICM8



The Chinese Society
for Metals (CSM)



The Japan Institute
of Metals (JIM)



The Korean Institute
of Metals and
Materials



Materials Australia
(MA)



The Minerals,
Metals & Materials
Society (TMS)

ABOUT PRICM-8

This triennial congress is the eighth in a series of international forums dedicated to advanced materials and processing. The congress is jointly organized and sponsored by five professional organizations: The Chinese Society for Metals (CSM), The Japan Institute of Metals (JIM); The Korean Institute of Metals and Materials (KIM); Materials Australia (MA); and The Minerals, Metals & Materials Society (TMS). Hosted this year by TMS, the congress rotates among these sponsoring organizations. PRICM-8 is being held at the Hilton Waikoloa Village in Waikoloa, Hawaii, which is situated in the middle of the Pacific Rim Region on the Kohala Coast on the Big Island of Hawaii.

WHO SHOULD ATTEND

Scientists, engineers, managers, government program officers, professors, and students involved in advanced materials and processing.

TECHNICAL PROGRAM

The PRICM-8 program will include plenary, keynote and invited lectures and contributed presentations on these symposia topics:

- Materials for Energy
- Materials for the Environment
- Advanced High-Temperature Structural Materials
- Advanced Steels and Processing
- Light Metals and Alloys
- Composites and Hybrid Materials
- Biomaterials, Smart Materials, and Structures
- Rare Earth, Electronic, and Magnetic Materials
- Thin Films and Surface Engineering
- Materials and Processes for Enhanced Performance
- Solidification, Deformation and Related Processing
- Modeling and Simulation of Processes, Microstructures, and Behavior
- Bulk Metallic Glasses, Nanocrystalline Materials, and Ultrafine-Grain Materials
- Advanced Materials Characterization and Evaluation
- Advanced Neutron and Synchrotron Studies of Materials

Visit the PRICM-8 website for the most up-to-date technical program details: www.tms.org/meetings/pricm8

REGISTRATION

All attendees and congress participants (presenters, exhibitors, etc.) must register for the congress. Congress badges must be worn for admission to technical sessions, the exhibition, and all congress events. To receive the discounted registration rate, register by June 4, 2013 at www.tms.org/meetings/pricm8

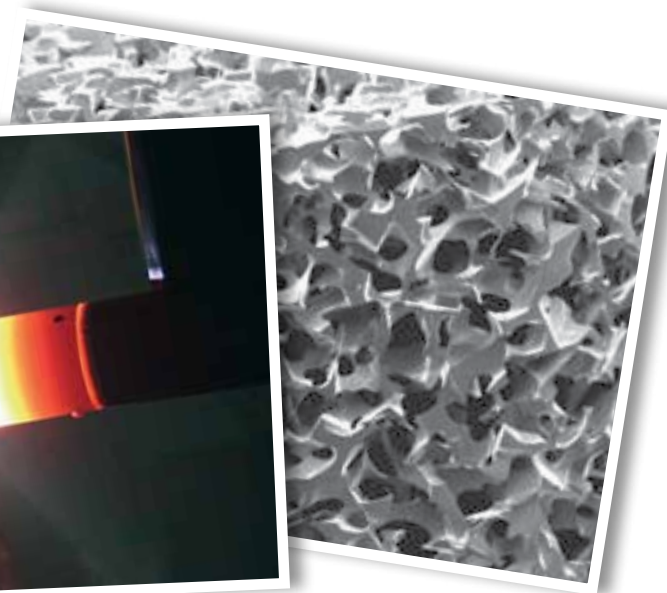
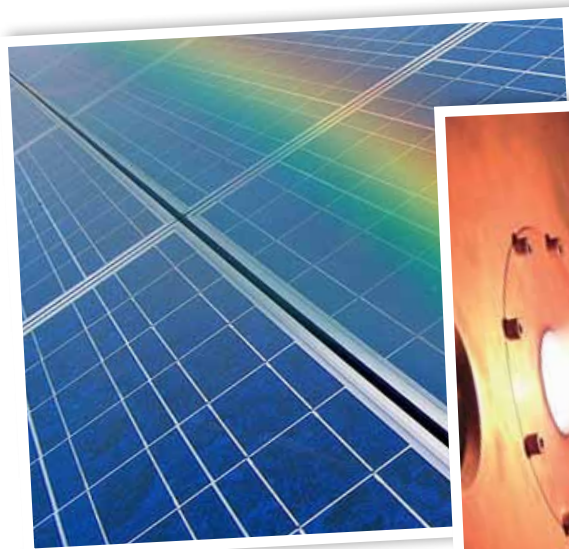
Registration Fees

	Through June 4	After June 4
Full Congress	\$695	\$795
Student Full Congress*	\$450	\$550

* Copy of student school identification card required; must mail or fax form.

Full congress registration fee includes:

- Admission to technical sessions, exhibition, and welcome reception
- Refreshment breaks
- Lunch on Monday, Tuesday, and Thursday
- One ticket to the congress banquet



CONGRESS ORGANIZERS

The PRICM congress is organized by a committee comprised of representatives from each of the five sponsoring organizations. Each organization has appointed representatives to serve as In-country Technical Representatives, International Organizing Committee Members, and Advisory Board Members.

Congress Honorary Chair

Elizabeth Holm, *Carnegie Mellon University (CMU)*

Congress Organizing Chair

Fernand Marquis, *Naval Postgraduate School*

REGIONAL CONGRESS ORGANIZERS

Chinese Society for Metals (CSM) Appointments

CSM In-Country Technical Representative

Chengjia Shang, *University of Science and Technology Beijing*

CSM International Organizing Committee Members

Pei Zhao, *Chinese Society for Metals*

Xishan Xie, *University of Science and Technology Beijing*

Yafang Han, *Beijing Institute of Aeronautical Materials*

CSM International Advisory Board Members

Changxu Shi, *Chinese Academy of Sciences*

Yuqing Weng, *Chinese Society for Metals*

Zengyong Zhong, *Chinese Society for Metals*

Japan Institute of Metals (JIM) Appointments

JIM In-Country Technical Representative

Tomoyuki Kakeshita, *Osaka University*

JIM International Organizing Committee Members

Tadashi Furuhashi, *Institute of Materials Research, Tohoku University*

Haruyuki Inui, *Kyoto University*

JIM International Advisory Board Members

Yoshinao Mishima, *Tokyo Institute of Technology*

Masaharu Kato, *Tokyo Institute of Technology*

Shuichi Miyazaki, *University of Tsukuba*

Korean Institute of Metals and Materials (KIM) Appointments

KIM In-Country Technical Representative

Do Hyang Kim, *Yonsei University*

KIM International Organizing Committee Members

Dong Hyuk Shin, *Hanyang University*

Kwang Seon Shin, *Seoul National University*

Chong Soo Lee, *POSTECH*

KIM International Advisory Board Members

Young Won Chang, *POSTECH*

Nack Joon Kim, *POSTECH*

Jun Hwa Hong, *Korea Atomic Energy Research Institute*

Materials Australia (MA) Appointments

MA In-Country Technical Representative

Jian-Feng Nie, *Monash University*

MA International Organizing Committee Members

Allan Morton, *CSIRO*

Simon Ringer, *The University of Sydney*

Mal Couper, *Monash University*

MA International Advisory Board Members

George Collins, *CAST CRC*

Peter Hodgson, *Deakin University*

Jim Williams, *The Australian National University*

The Minerals, Metals & Materials Society (TMS) Appointments

TMS In-Country Representative

Fernand Marquis, *Naval Postgraduate School*

TMS International Organizing Committee Members

Marc Meyers, *University of California at San Diego*

Naresh Thadhani, *Georgia Institute of Technology*

TMS International Advisory Board Members

Diran Apelian, *Worcester Polytechnic Institute*

David Bourell, *University of Texas*

George T. "Rusty" Gray, *Los Alamos National Laboratory*

TMS Organizational Liaison

James J. Robinson, *TMS*

Louise Wallace, *TMS*

Plan to attend the PRICM Plenary Session!

Monday, August 5

8 a.m. to 12 p.m.

Grand Ballroom

Hilton Waikoloa Village

All congress registrants are invited to participate in an exciting and informative plenary session on current and future materials innovations in China, Japan, Korea, Australia, and the United States.

Esteemed speakers representing the government-funded laboratories and institutes from the five geographic domains have been invited to present an overview of their current activity area as well as what is on the horizon for materials science and engineering.

Confirmed speakers include:

- China: **Professor Yuping Weng**, Vice President, Ministry of Metallurgy, Academy of Engineering
- Japan: **Professor Teruo Kishi**, Chairman of Tsukuba Innovation Arena (TIA) and Professor Emeritus at the University of Tokyo
- Korea: **Dr. Dong Wha Kum**, Vice President of the National Academy of Engineering of Korea and Endowed Chair Researcher at the Korea Institute of Science and Technology
- Australia: **Dr. Cathy Foley**, Chief of the CSIRO Materials Science and Engineering
- United States: **Dr. Laurie E. Locascio**, Director of the Material Measurement Laboratory, National Institute of Standards and Technology

For more information about the speakers, their presentation titles, and other news about PRICM-8, visit www.tms.org/meetings/pricm8

OPTIONAL TOURS

NOTE: All tours will be held on Wednesday, August 7.

Submarine Tour

An Atlantis Submarine tour is an ideal way to gain first-hand insight into the value and importance of reefs and to observe how mankind can contribute to the development of reefs and associated ecosystems. This tour offers an exclusive 50-minute journey aboard one of the world's most technologically advanced passenger submarines along with expert narration and a fish identification card at each seat for easy marine life reference. Round-trip transportation is included.

Date: **Wednesday, August 7**

Depart from Hotel: 8:00 a.m.

Return to Hotel: 10:30 a.m.

Fee: \$145



Grand Circle Island Tour

Experience the wonders and excitement of the Big Island of Hawaii. An air-conditioned motor-coach will take you on a scenic full circle island tour narrated by a professional guide/driver. Be prepared for all types of weather - bring a light jacket, dress comfortably, and wear your walking shoes! Lunch is not included but will be available for purchase.

Date: **Wednesday, August 7**

Depart from Hotel: 8:50 a.m.

Return to Hotel: 8:00 p.m.

Fee: \$110



Mauna Kea Summit Tour

The drive to the summit of Mauna Kea is one you'll never forget. It's hard to believe you're in Hawaii as you climb over 13,000 feet above sea level. Once at the summit you are presented spectacular views of the horizon, Haleakala on Maui, Mauna Loa and Hualalai, and Mauna Kea's world-class array of telescopes. Mauna Kea is the world's tallest island mountain, rising over 32,000 feet from the ocean floor to its summit, which is considered by many Hawaiians to be the most sacred place in all the islands.

While getting acclimated to the altitude, participants will enjoy a hot picnic dinner at a private location and have the opportunity to mingle with the TMS Executive Director, James J. Robinson. This tour will include a view of the sunset at the summit of Mauna Kea and a private star show with telescopes. Hooded winter parkas will be provided.

It is strongly advised that persons with respiratory or heart condition, pregnant women, or those in poor health not participate. Participants will be required to read the Health Precaution Statement and sign an activity waiver before going on the tour.

Date: **Wednesday, August 7**

Depart from Hotel: 3:15 p.m.

Return to Hotel: 11:00 p.m.

Dinner: Choice of Hot BBQ Chicken with mild Korean Chili Sauce served with warm Cornbread and Coleslaw - or - Cold Vegetarian Spinach Wrap served with Glazed Carrots and Tabouleh.

Fee: \$235

NETWORKING AND SOCIAL EVENTS

Sunday, August 4

Welcome Reception
8:00 p.m. to 9:30 p.m.

Monday, August 5

Lunch, Posters, and Exhibits
12:00 p.m. to 1:30 p.m.

Tuesday, August 6

Lunch and Posters
12:00 p.m. to 1:30 p.m.

Wednesday, August 7

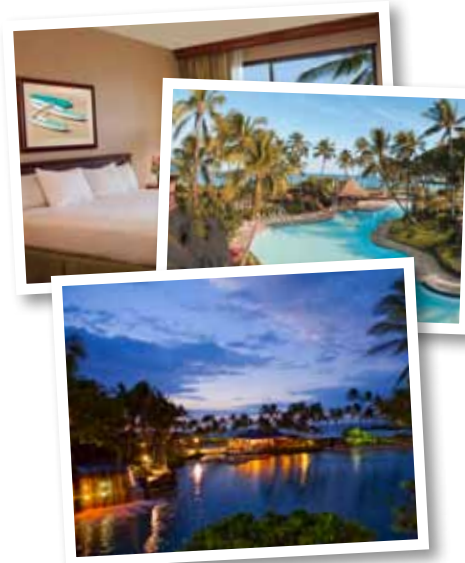
Social Tours
(Three options available)

Thursday, August 8

Lunch and Posters
12:00 p.m. to 1:30 p.m.

Thursday, August 8

Congress Dinner



TRAVEL

A block of rooms has been reserved at a special rate for congress attendees at the Hilton Waikoloa Village, where congress activities will be held, and at the nearby Waikoloa Beach Marriott Resort & Spa. **Accommodations must be secured by July 8, 2013.**

PRICM-8 Headquarters: Hilton Waikoloa Village

For convenient access to all of the congress technical sessions and activities, book a room at the Hilton Waikoloa Village in Waikoloa, Hawaii, the headquarters of the PRICM-8 congress. Contained within three low-rise towers, the accommodations of Hilton Waikoloa Village exhibit true comfort and exceptional island hospitality. The Village presides over 62 oceanfront acres along the sunny Kohala Coast and offers an extensive array of amenities, including tropical gardens, beautifully appointed guest rooms, and extensive indoor and outdoor meeting and event venues.

Waikoloa Beach Marriott Resort & Spa

Located beachfront along the sun-splashed Kohala Coast, a premier destination for Hawaii hotels on Big Island, the luxurious Waikoloa Beach Marriott Resort & Spa welcomes guests with gracious style and Hawaiian service. With the bounty of land and sea captured in stunning views, this Big Island Hawaii hotel and resort is the perfect place for a memorable vacation with family or meeting with colleagues. The multi-million dollar renovation provides a warm, fresh look within the Waikoloa Resort, which offers 36 holes of golf, shopping, casual and fine dining, and so much more. Experience an authentic Polynesian show at the Sunset Luau, available Wednesdays and Saturdays.

For details on booking your accommodations please visit the **“Housing and Travel”** section of the PRICM-8 website at www.tms.org/meetings/PRICM8

GETTING THERE

Kona, Hawaii Airport

Hilton Waikoloa Village is 19.3 miles from Kona International Airport (KOA). When departing the Kona International Airport, turn left (north) onto Highway 19 for approximately 20 minutes. Continue until you see the Waikoloa Beach Drive turnoff to the left (west) of the highway. Along Waikoloa Beach Drive, you will pass four stop signs. Just after the fourth stop sign, you will see the entrance to Hilton Waikoloa Village on the left.

Waikoloa Beach Marriott Resort & Spa is also 19.3 miles from Kona International Airport (KOA). Upon departing Kona International Airport, head north on Kupipi St. Make a slight left to stay on Kupipi St. Make a slight left toward Keahole Airport Road. Keep right at the fork and continue straight onto Keahole Airport Road. Turn left onto HI-19/Queen Kaahumanu Hwy for 17 miles and turn left onto Waikoloa Beach Drive. Make a U-turn at Kolea Beach Drive and hotel will be on the right.

Shuttle service will not be provided from the airport to the Hilton or Marriott properties. Shuttle service is available through Speedi Shuttle or Resort Transportation; fee: **\$51** (one way). Estimated taxi fare: **\$65** (one way).

SpeediShuttle:

kona@speedishuttle.com
or 1-877-242-5777.



EXHIBIT & SPONSORSHIP OPPORTUNITIES

Your company's name and branding will be showcased in a high-visibility area before a captive audience. The organizers have identified a number of high-profile sponsorship opportunities for companies that support PRICM-8 development.

Additional Sponsor Benefits

Sponsor recognition includes acknowledgement in the congress program and on the congress website. Each sponsorship of \$2,500 or more includes one complimentary space in the congress networking area.

Reserve your company's spot at PRICM-8's table-top exhibit area. For \$1750, you will receive a 16" x30" draped table, two chairs, wastebasket & electricity along with direct access to an international audience in the advanced materials and processing industry.

For more information on exhibiting or purchasing a corporate sponsorship contact TMS at (724) 776-9000 ext. 231 or exhibits@tms.org.



THE 8TH PACIFIC RIM INTERNATIONAL CONGRESS ON ADVANCED MATERIALS AND PROCESSING

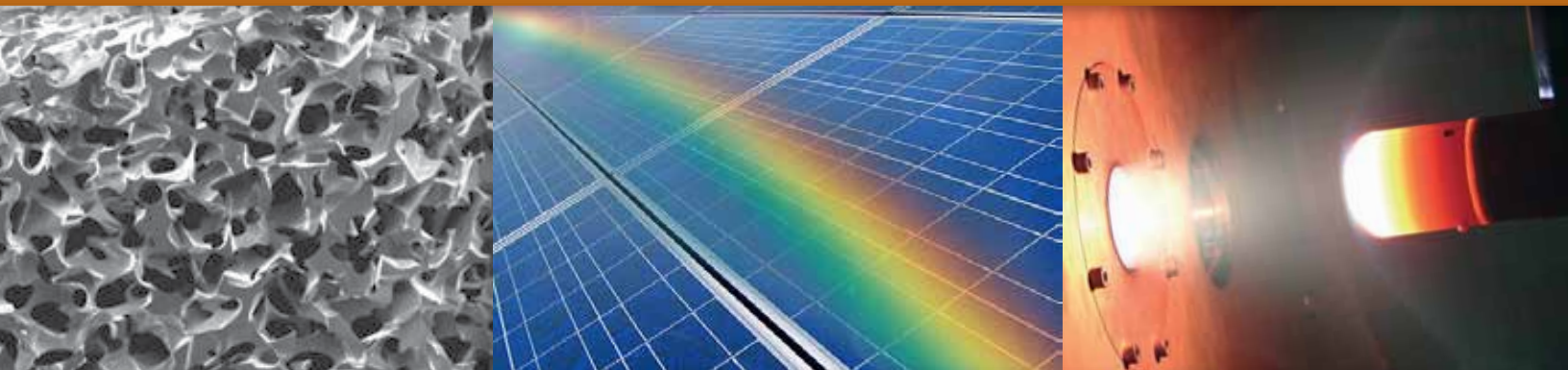
**August 4-9, 2013
Waikoloa, Hawaii USA**

DON'T FORGET!

Register by June 4, 2013 and Save!

www.tms.org/meetings/pricm8

PROGRAM PREVIEW



**For more information,
contact:**

TMS Meeting Services

184 Thorn Hill Road
Warrendale, PA 15086-7514 USA

Telephone: (724) 776-9000, ext. 243 or (800) 759-4TMS

Fax: (724) 776-3770

E-mail: mtgserv@tms.org



The Chinese Society for Metals (CSM)



The Japan Institute of Metals (JIM)



The Korean Institute of Metals and Materials



Materials Australia (MA)



The Minerals, Metals & Materials Society (TMS)